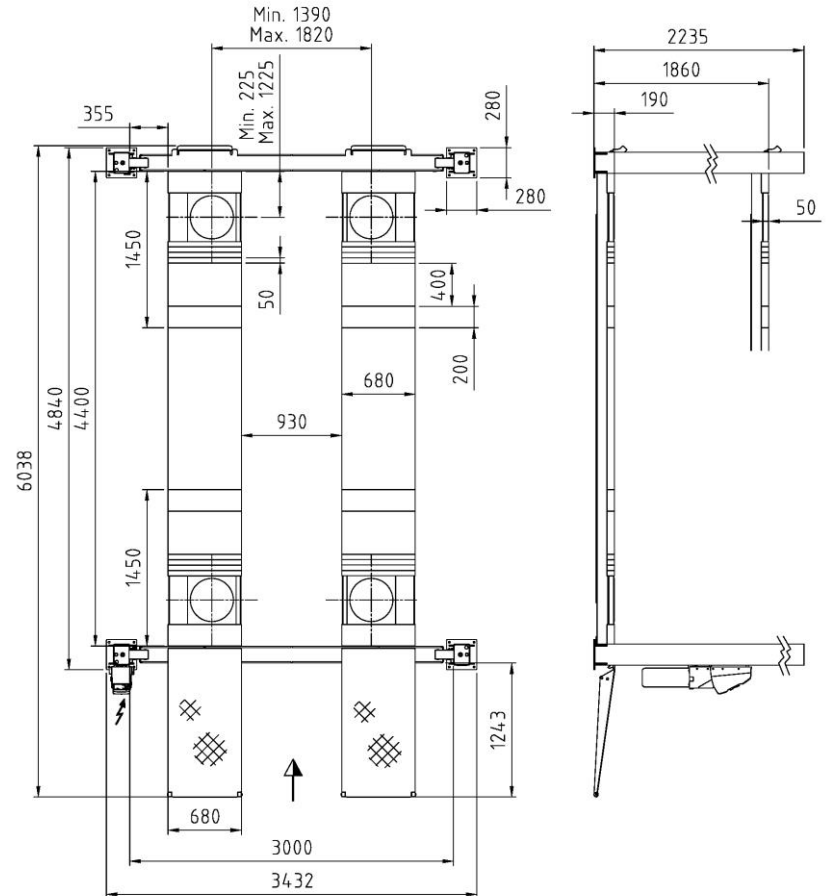




Order no.	Item no.	#	Part of the approval according to order no. 20011106:
20011106	931838	1	Major 4030-44 WL DLX, 400/3/50 - powder coated - RAL 9010/7016
	755714	1	Filling pieces for front recess instead of turn tables (1 set = 2 pieces)
	755069	1	Set of 16 expansion anchor bolts - HSL - 3 M 10/40 (L=130)
	756579	1	Set of 2 drive-on ramps for Major 4030-44 WL, 1200mm
	756580	1	Set of 2 end stops for Major 4030-44 WL DLX & 5529-55 WL - powder coated



The 4-post wheel alignment lift Major 4030-44 WL DLX impresses with **optimum driveability**, from small cars to smaller commercial vehicles. This lift automatically settles in a finely adjusted catch bar that ensures **optimal track position for successful wheel alignment**. With a platform length of 4400 mm and a load capacity of 4.0 tonnes, it is the ideal wheel alignment solution for cars in surface-mounted areas. It can be installed both on-floor and recessed. To meet the needs of as **many track widths as possible**, a platform can be moved transversely to the driving direction. This is how we ensure that even the narrowest vehicles can be lifted. In addition, the lift impresses with a **convenient effective height of 2.0 m**, thus fully meeting current workplace ergonomics requirements.

#### Standardlackierung:

Platforms & posts: RAL 7016

Ramps: RAL 3020

#### Options:

LED-lighting set

Extra control unit

Set of two cover plates for recesses