



BMW & MINI

Product catalogue

Products recommended by BMW

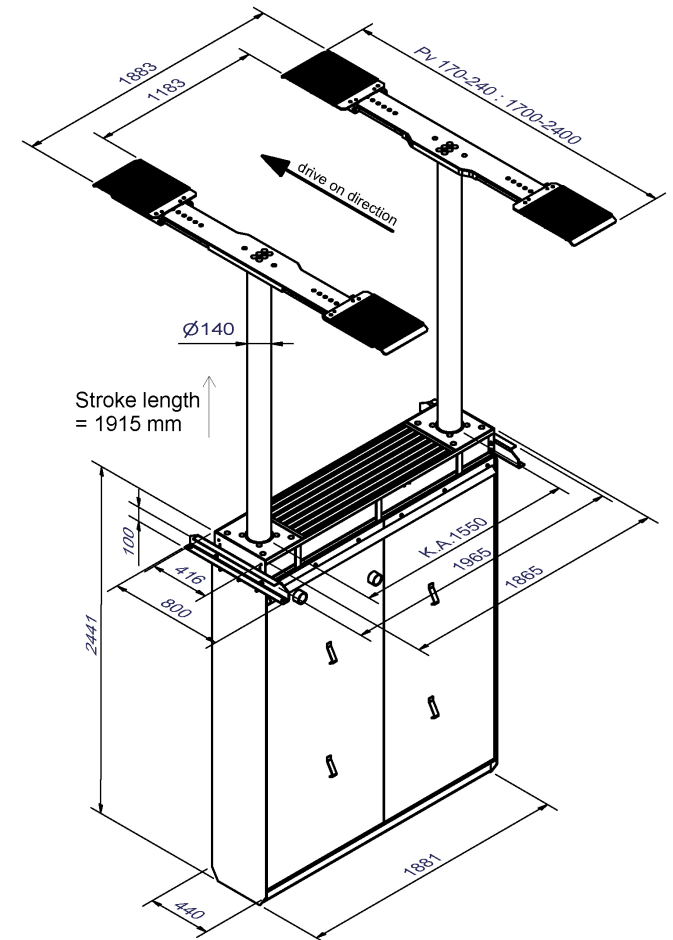
Inground lifts | Surface-mounted lifts

Masterlift 2.35 NxT Pv BMW

Electro-hydraulic twin-ram lift, 3.5 t with repair platforms



Order no.	Item no.	#	Part of the approval according to order no. 20011110
20011110	21556	1	Drive-over superstructure 2.35 Pv 170-240
	14050	1	Hydraulic unit ML 2.35 NxT, Ø 140mm, PD 1550, stroke 1915mm
	11063	1	Set of cables 10m (Std. EL, ML, PL, BL)
	12033	1	Ecological hydraulic fluid 10 ltr.



The Masterlift 2.35 NxT Pv repair platform is optimally suited for **quick and easy vehicle lifting**. The premium version is constructed of very strong and rigid **solid steel** that offers a **high degree of stability**. They are zinc coated and painted. Looks great and works great! Our premium repair platforms make the Masterlift 2.35 NxT the perfect helper in your workshop. The handy, **non-slip and form-fitting rubber pads** ensure that the vehicle is lifted with pinpoint accuracy. The **strong 140 mm diameter cylinders** are also designed for long-lasting functionality and further round off the high-quality level, which ensures **low maintenance requirements**. Even in the event of a power blackout, the lift can still be lowered without any problems thanks to the pneumatic emergency lowering system. The Masterlift 2.35 NxT Saa is perfectly completed by a **control system that is both visually and technically convincing**.

Standard colour:

Pv Premium: zinc coated and painted – RAL 7016

Options:

- Rubber blocks in different heights
- Active cassette ventilation
- Moisture monitoring in the steel cassette

Versions:

- Self-supporting design without load on the bottom of the cassette
- Floor-standing design

Installation variants:

- On-floor installation
- Recessed installation
- Ceiling installation

Frame:

Standard: completely hot-dip galvanized

Sub-casing:

- Standard: painted
- Optional: hot-dip galvanized or plastic-coated

Masterlift 2.35 NxT Pv - BMW 08 502671



BMW 08 502672
Order no. 20011111

Order no.	Item no.	#	Part of the approval according to order no. 20011111
20011111	21556	1	Drive-over superstructure 2.35 Pv 170-240
	14129	1	Lifting unit ML 2.35 NxT TR KA 1550, 2000mm stroke with cardan shaft
	11063	1	Set of cables 10m (Std. EL, ML, PL, BL)
	12033	1	Ecological hydraulic fluid 10 ltr.

The Masterlift 2.35 NxT TR Pv repair platform is optimally suited for **quick and easy vehicle lifting**.

The premium version is constructed of very strong and rigid **solid steel** that offers a **high degree of stability**. They are zink coated and painted. Looks great and works great!

Our premium **repair platforms** make the Masterlift 2.35 NxT the perfect helper in your workshop.

The handy, **non-slip and form-fitting rubber pads** ensure that the vehicle is lifted with pinpoint accuracy.

The **strong 140 mm diameter cylinders** are also designed for long-lasting functionality and further round off the high-quality level, which ensures **low maintenance requirements**.

Even in the event of a power blackout, the lift can still be lowered without any problems thanks to the pneumatic emergency lowering system.

The Masterlift 2.35 NxT TR Saa is perfectly completed by a **control system that is both visually and technically convincing**.

Standard colour:

Pv Premium: zink coated and painted – RAL 7016

Options:

Rubber blocks in different heights

Frame:

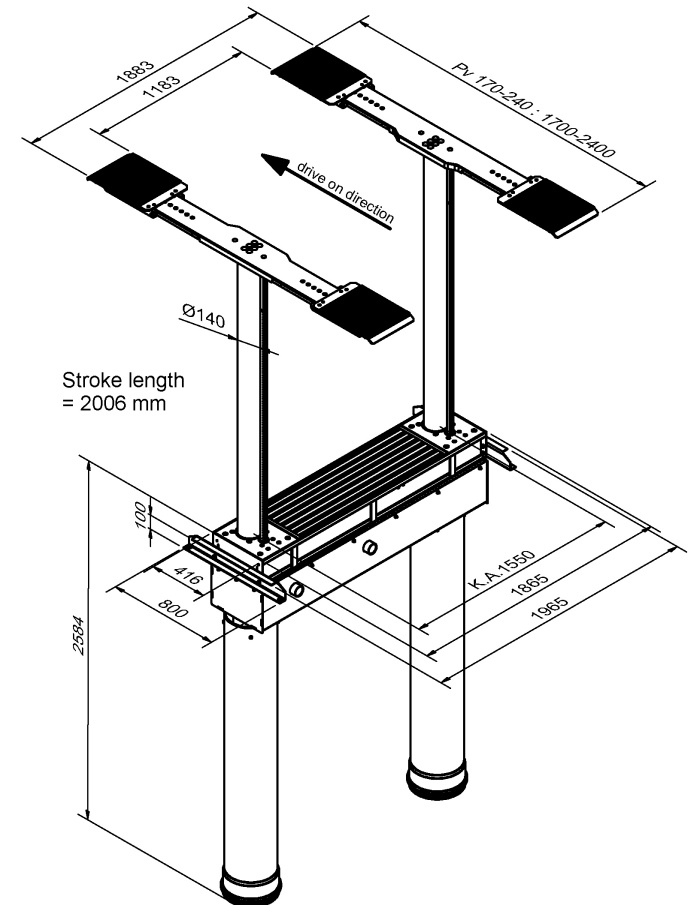
Standard: completely hot-dip galvanized
Incl. tube connection frame

Installation variants:

On-floor installation
Recessed installation
Ceiling installation

Standard:

Basically self-supporting design





BMW 08 502673
Order no. 20011112-1 & 20011112-2

Order no.	Item no.	#	Part of the approval according to order no. 20011112-1/-2:
20011112-1	21214	1	Swivel arm superstructure 2.35 Saa 260 Universal
20011112-2	14051	1	Hydraulic unit ML 2.35 NxT, Ø 140mm, PD 2600, stroke 1915mm
	11063	1	Set of cables 10m (Std. EL, ML, PL, BL)
	12033	1	Ecological hydraulic fluid 10 ltr.

The double telescopic swivel arms convince with a **very low minimum height**, which even makes it possible to lift low-profile sports cars without any problems. Tyres and rims are protected in the best possible way by the rounded design of the superstructure's chassis. The **internal arm locking system** installed as standard reliably protects against external influences.

The **strong 140 mm diameter cylinders** are also designed for long-lasting functionality and further round off the high-quality level, which ensures **low maintenance requirements**. Even in the event of a power blackout, the lift can still be lowered without any problems thanks to the pneumatic emergency lowering system. The Masterlift 2.35 NxT Saa is perfectly completed by a **control system that is both visually and technically convincing**.

Standard color:

Base plate: RAL 7016
Arms: RAL 3020 - optionally with KTL coating

Options:

Wide range of extra pads, depending on vehicle type
Active cassette ventilation
Moisture monitoring in the steel cassette
Special colours on request

Versions:

Self-supporting design, without load on the bottom of the cassette
Floor-standing design

Installation variants:

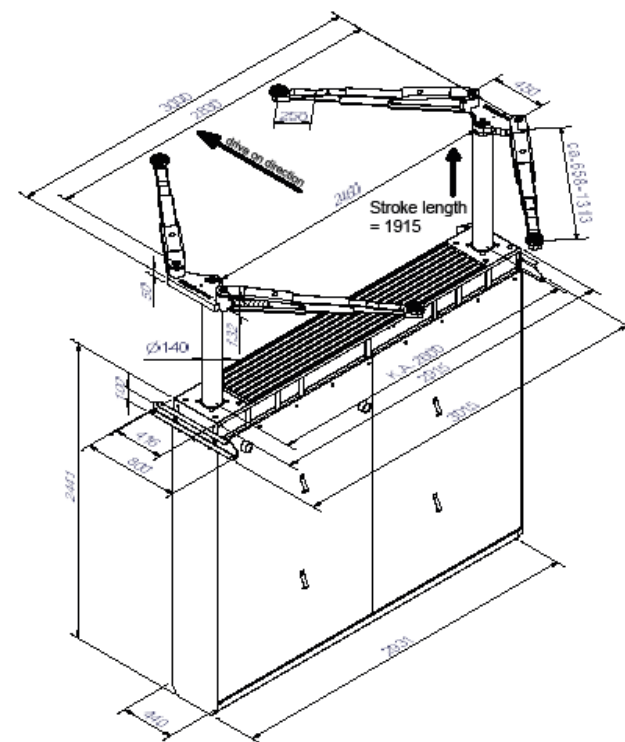
On-floor installation
Recessed installation
Ceiling installation

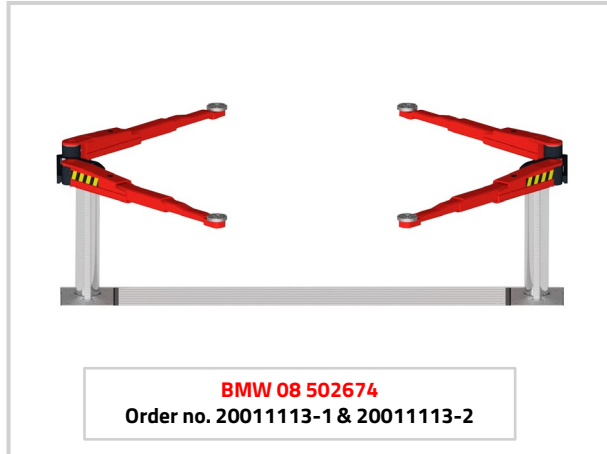
Frame:

Standard: completely hot-dip galvanized

Sub-casing:

Standard: painted
Optional: hot-dip galvanized or plastic coated





BMW 08 502674
Order no. 20011113-1 & 20011113-2

Order no.	Item no.	#	Part of the approval according to order no. 20011113-1/-2:
20011113-1	21547	1	Swivel arm superstructure 2.35 NxT Rack and Pinion Saa 260 Universal
20011113-2	14130	1	Lifting unit ML 2.35 NxT TR KA 2600, 2000mm stroke with cardan shaft
	11063	1	Set of cables 10m (Std. EL, ML, PL, BL)
	12033	1	Ecological hydraulic fluid 10 ltr.

The double telescopic swivel arms convince with a **very low minimum height**, which even makes it possible to lift low-profile sports cars without any problems. Tyres and rims are protected in the best possible way by the rounded design of the superstructure's chassis. The **internal arm locking system** installed as standard reliably protects against external influences.

The **strong 140 mm diameter cylinders** are also designed for long-lasting functionality and further round off the high-quality level, which ensures **low maintenance requirements**. Even in the event of a power blackout, the lift can still be lowered without any problems thanks to the pneumatic emergency lowering system. The Masterlift 2.35 NxT TR Saa is perfectly completed by a **control system that is both visually and technically convincing**.

Standard color:

Base plate: RAL 7016
Arms: RAL 3020 - optionally with KTL coating

Options:

Wide range of extra pads, depending on vehicle type
Special colours on request

Standard:

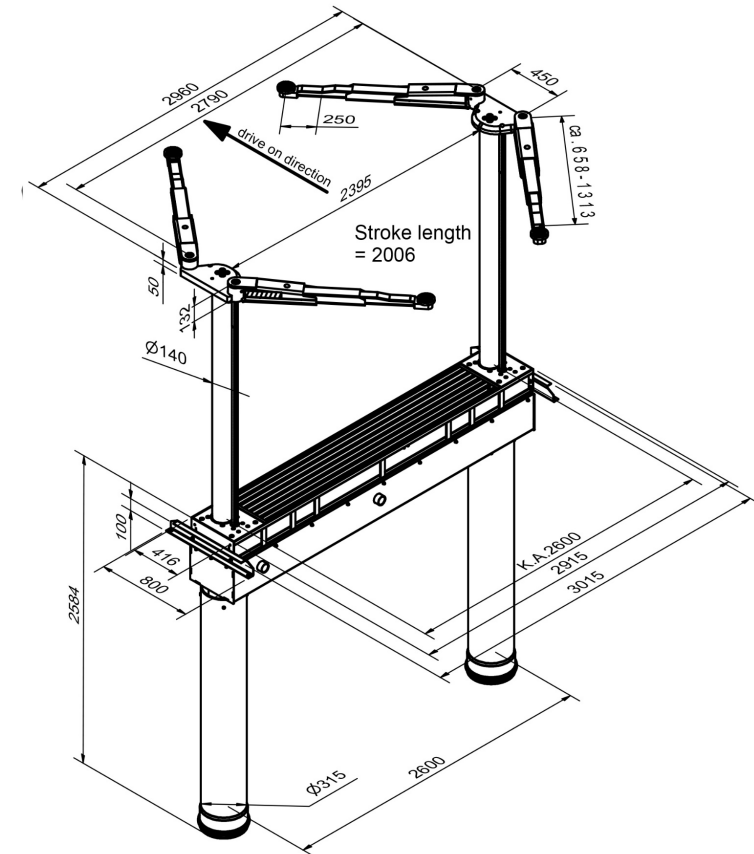
Basically self-supporting design

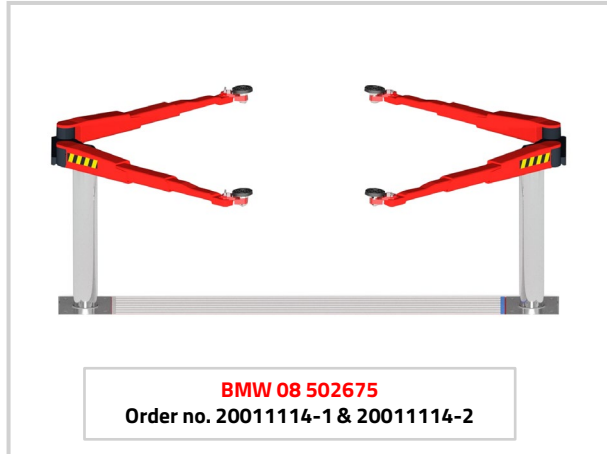
Installation variants:

On-floor installation
Recessed installation
Ceiling installation

Frame:

Standard: completely hot-dip galvanized
Incl. tube connection frame





Order no.	Item no.	#	Part of the approval according to order no. 20011114-1/-2:
20011114-1	21214	1	Swivel arm superstructure 2.35 Saa 260 Universal
	16046	1	Set of 4 E-adapters for Ø50mm pick-up
20011114-2	14051	1	Hydraulic unit ML 2.35 NxT, Ø 140mm, PD 2600, stroke 1915mm
	11063	1	Set of cables 10m (Std. EL, ML, PL, BL)
	12033	1	Ecological hydraulic fluid 10 ltr.

The double telescopic swivel arms convince with a **very low minimum height**, which even makes it possible to lift low-profile sports cars without any problems. Tyres and rims are protected in the best possible way by the rounded design of the superstructure's chassis. The **internal arm locking system** installed as standard reliably protects against external influences.

The **strong 140 mm diameter cylinders** are also designed for long-lasting functionality and further round off the high-quality level, which ensures **low maintenance requirements**. Even in the event of a power blackout, the lift can still be lowered without any problems thanks to the pneumatic emergency lowering system. The Masterlift 2.35 NxT Saa is perfectly completed by a **control system that is both visually and technically**

Standard color:

Base plate: RAL 7016
Arms: RAL 3020 - optionally with KTL coating

Options:

Wide range of extra pads, depending on vehicle type
Active cassette ventilation
Moisture monitoring in the steel cassette
Special colours on request

Versions:

Self-supporting design, without load on the bottom of the cassette
Floor-standing design

Installation variants:

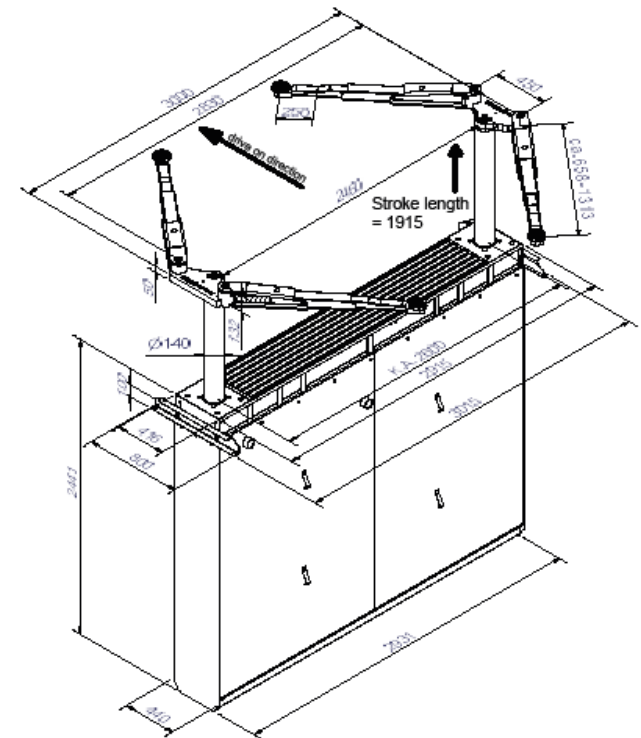
On-floor installation
Recessed installation
Ceiling installation

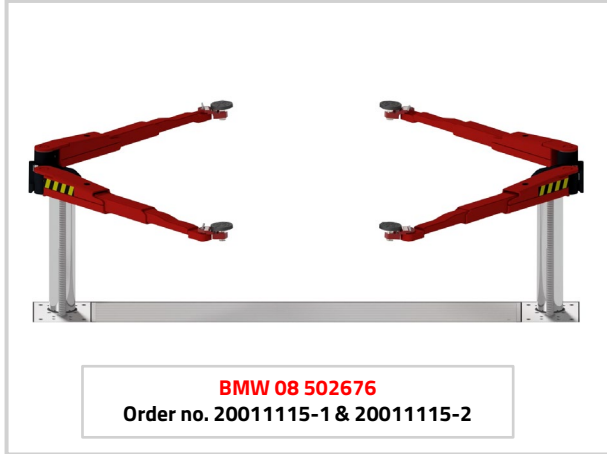
Frame:

Standard: completely hot-dip galvanized

Sub-casing:

Standard: painted
Optional: hot-dip galvanized or plastic coated





BMW 08 502676
Order no. 20011115-1 & 20011115-2

Order no.	Item no.	#	Part of the approval according to order no. 20011115-1/-2:
20011115-1	21547	1	Swivel arm superstructure 2.35 NxT Rack and Pinion Saa 260 Universal
	16046	1	Set of 4 E-adapters for Ø50mm pick-up
20011115-2	14130	1	Lifting unit ML 2.35 NxT TR KA 2600, 2000mm stroke with cardan shaft
	11063	1	Set of cables 10m (Std. EL, ML, PL, BL)
	12033	1	Ecological hydraulic fluid 10 ltr.

The double telescopic swivel arms convince with a **very low minimum height**, which even makes it possible to lift low-profile sports cars without any problems. Tyres and rims are protected in the best possible way by the rounded design of the superstructure's chassis. The **internal arm locking system** installed as standard reliably protects against external influences.

The **strong 140 mm diameter cylinders** are also designed for long-lasting functionality and further round off the high-quality level, which ensures **low maintenance requirements**. Even in the event of a power blackout, the lift can still be lowered without any problems thanks to the pneumatic emergency lowering system. The Masterlift 2.35 NxT TR Saa is perfectly completed by a **control system that is both visually and technically convincing**.

Standard color:

Base plate: RAL 7016
Arms: RAL 3020 - optionally with KTL coating

Options:

Wide range of extra pads, depending on vehicle type
Special colours on request

Standard:

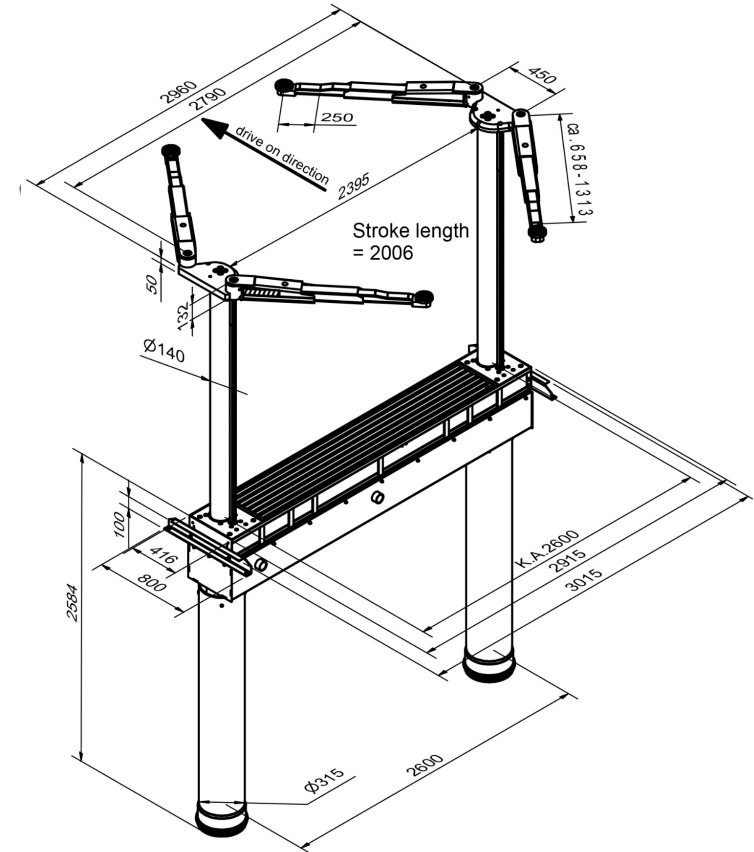
Basically self-supporting design

Installation variants:

On-floor installation
Recessed installation
Ceiling installation

Frame:

Standard: completely hot-dip galvanized
Incl. tube connection frame





Order no.	Item no.	#	Part of the approval according to order no. 20011102-1/-2:
20011102-1	21500	1	Superstructure platform 2.35 F 440 Combi Check in, on-floor
	12461	1	BMW-approval and painting - grey RAL 7016
20011102-2	10290	1	Hydraulic unit ML 2.35 Combi Check in, PD 1550, stroke 1900mm
	12036	1	Ecological hydraulic fluid 17 ltr.
	20798	1	Repair platform superstructure 2.35 Pv 170-240
	11071	1	Electrical wiring JE 10m (Combi, Fn)

Masterlift 2.35 Combi Check-in KA 1550 BMW – BMW 08 500937

The Masterlift 2.35 Combi Check-in PD 1550 is optimally suited for **quick and easy vehicle lifting**. The platform is constructed of very strong and rigid **solid steel** that offers a **high degree of stability**. They are zinc coated and painted. Looks great and works great! Various lengths of repair platforms, which come with **xy-function in the premium version as standard**, make the Masterlift 2.35 NxT the perfect helper in your workshop.

Four **strong 123 mm diameter cylinders** are also designed for long-lasting functionality and further round off the high-quality level, which ensures **low maintenance requirements**.

Even in the event of a power blackout, the lift can still be lowered without any problems thanks to the pneumatic emergency lowering system.

The Masterlift Combi Check-in KA 1550 is perfectly completed by a **control system that is both visually and technically convincing**.

Standard color:

Platforms: RAL 7016 and aluminium coated and integrated LED lighting
Pv Premium: zinc coated and painted RAL 7016

Options:

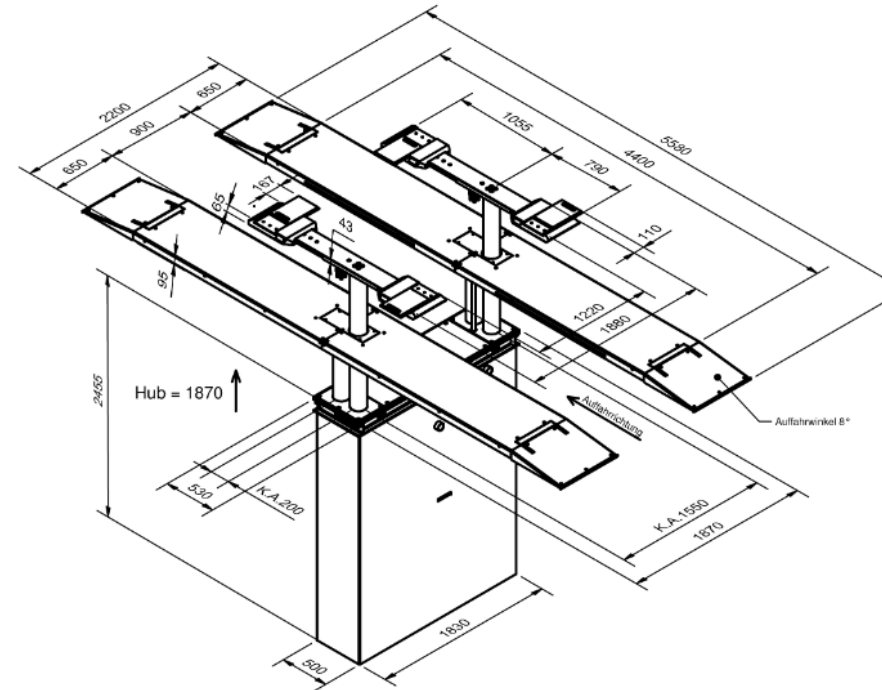
Rubber blocks in different heights

Installation:

Superstructure on floor
Superstructure in floor

Steel cassette:

Standard: primed
Optional: hot-dip galvanized or plastic coated



Sharklift 4.55 F 480 BMW

Electro-hydraulic 4-ram lift, 6.5 t, with platforms



BMW 08 501885
 Order no. 20011103-1 & 20011103-2

Order no.	Item no.	#	Part of the approval according to order no. 20011103-1/-2:
20011103-1	21538	1	Platform superstructure 4.55 F 480 PD 1550/3000 with cross beams
	12455	1	AUTOPSTENHOJ painting - grey RAL 7016 - red RAL 3020
	20547	1	Sliding plates autop-Premium (1 set = 2 pieces)
	21536	1	Automatically rising stoppers SHL 4.55 (1 Set = 2 pcs) for recessed installation with cross beam
	12942	1	LED Illumination, 3 pieces per platform
	12461	1	BMW-approval and painting - grey RAL 7016
20011103-2	10299	1	Hydraulic unit SHL 4.55, Zyl. Ø 140, stroke 1875mm
	11073	1	Electrical connection cables
	12040	1	Ecological hydraulic fluid, 20 ltr.

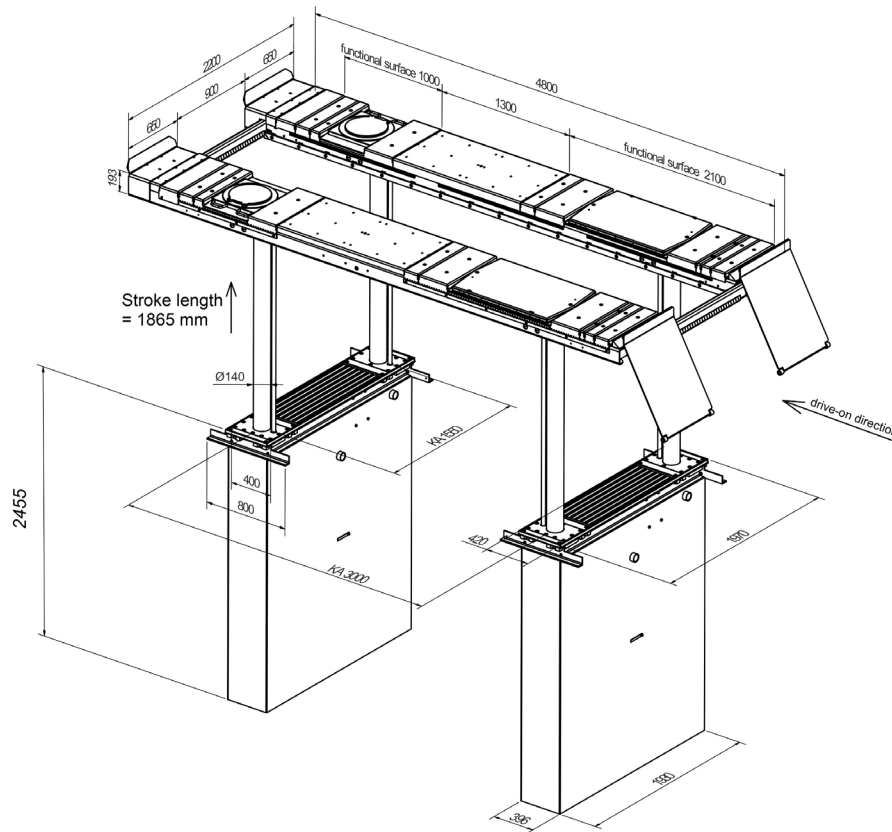
The Sharklift 4.65 F 550 is optimally suited for **quick and easy wheel alignment**. The platform is constructed of very strong and rigid **solid steel** that offers a **high degree of stability**. They are zinc coated and painted. Looks great and works great!
 The Sharklift 4.65 F 550 also impresses with its enormous precision! Four **strong 213 mm diameter cylinders and four mechanical safety ratchets** are also designed for long-lasting functionality and further round off the high-quality level, which ensures **low maintenance requirements**.
 The Sharklift 4.65 F 550 is perfectly completed by a **control system that is both visually and technically convincing**.

Standard color:
 RAL 7016 / RAL 3020

Options:
 LED-lighting set
 Scissor jack

Installation:
 Superstructure on floor
 Recessed installation with or without flush-floor device

Steel cassette:
 Standard: primed
 Optional: hot-dip galvanized or plastic coated

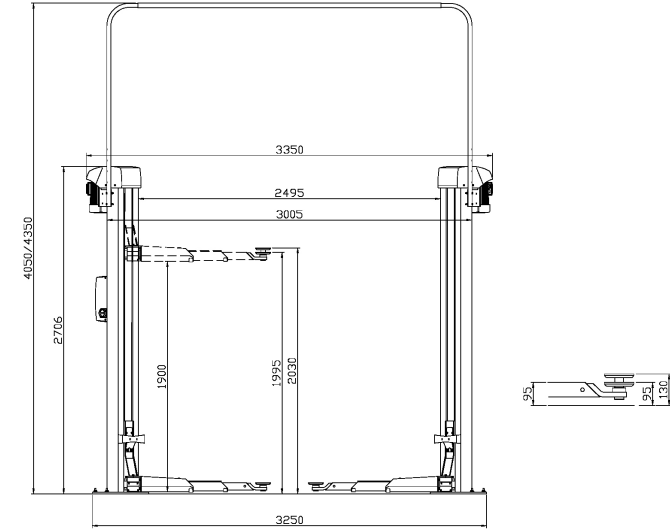


Maestro 32 F BMW

Electro-mechanical 2-post lift, 3.2 t capacity



Order no.	Item no.	#	Part of the approval according to order no. 20011118:
20011118	089185	1	Maestro 32 F - DT/DT, 400/3/50 - 4050/4350mm - Ø40 - RAL 9010/7016
	777473	1	Set of 14 expansion anchor bolts - HST3 M12x115 40/20
	776477	1	Portal set for Maestro 2.30/2.32/30/32, 4050mm



The 2-post lifts of the Maestro 32/35 series impress with their premium construction. They come with **stable bent columns**.

Smooth running is ensured by the **sliding bearing carriage**.

The **cold-rolled spindle** guarantees a **particularly long service life**.

The columns are asymmetrically positioned, i.e. vehicles can be positioned far to the rear, which ensures an **optimal door opening angle**.

Of course, the Maestro 32 also has door stop protection to prevent damage when entry and exit.

The **swivel arms are extremely flat** and thus ensure a **low minimum height**. The **internal arm locking system** with strong 360° interlocking protects against moisture and dirt.

Standard colour:

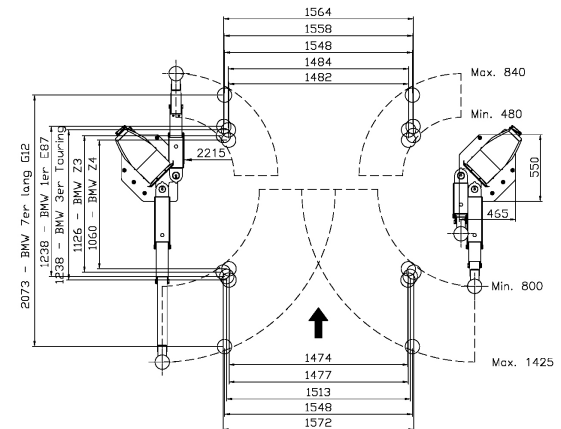
Arms: RAL 3020
Posts: RAL 7016

Versions:

Available for different voltages
F = flex pad

Options:

- Available with different portal heights
- LED lighting set
- Energy set with compressed air and socket-outlet
- Extra control unit for second column
- Large program of extra pads, depending on type of vehicle





BMW 08 501067
Order no. 20011104

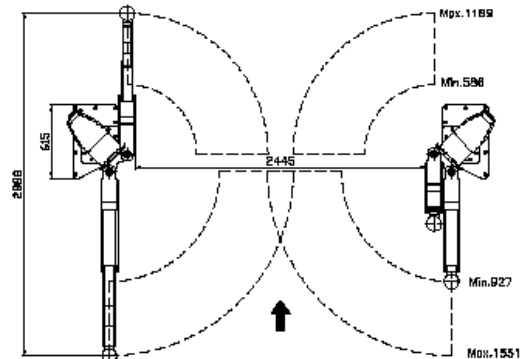
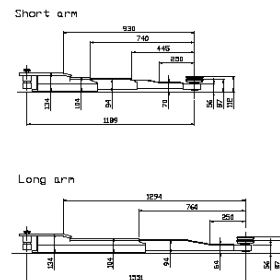
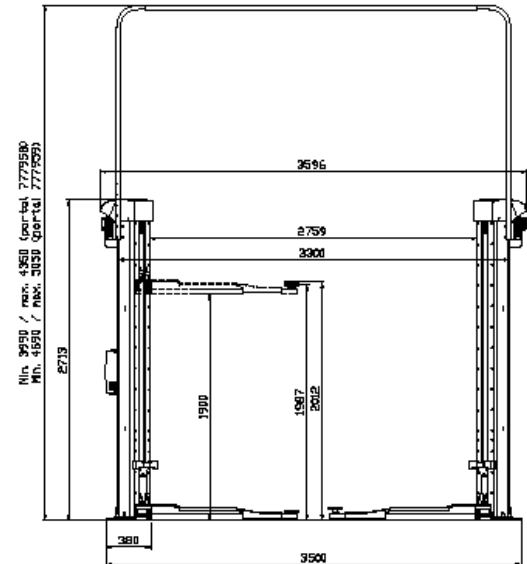
Order no.	Item no.	#	Part of the approval according to order no. 20011104:
20011104	098470	1	Maestro 2.35 NxT F DT/ST 400/3/50 – 4350/5050mm
	777958	1	Portal set (4060) Maestro 2.35 NxT (H: 1675mm)

The 2-post lifts of the Maestro 2.xx series impress with their premium construction. They come with **extremely stable and welded columns**. Smooth running behaviour is ensured by the **roller-bearing carriage**. The **cold-rolled spindle** guarantees a **particularly long service life**. The columns are asymmetrically positioned, i.e. vehicles can be positioned far to the rear, which ensures an **optimal door opening angle**. Of course, the Maestro 2.35 NxT also has a door stop protection to prevent damage during entry and exit. The **swivel arms are extremely flat** and thus ensure a **low minimum height**. The **internal arm locking system** with strong 360° interlocking protects against moisture and dirt.

Standard color:
Arms: RAL 3020
Posts: RAL 7016

Options:
Available with different portal heights, alternatively inground kit
LED lighting set
Energy set with compressed air and socket-outlet
Set of expansion bolts
Extra control unit for second column
Large program of extra pads, depending on type of vehicle

Versions:
Available for different voltages
F = flex pad





BMW 08 502677
Order no. 20011116

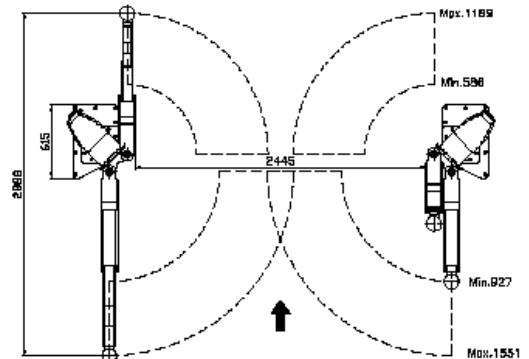
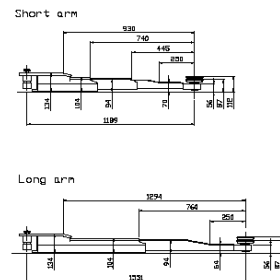
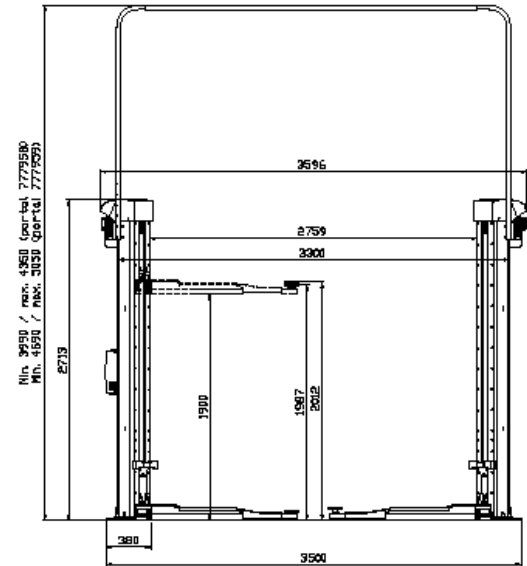
Order no.	Item no.	#	Part of the approval according to order no. 20011116:
20011116	098470	1	Maestro 2.35 NxT F DT/ST 400/3/50 – 4350/5050mm
	777958	1	Portal set (4060) Maestro 2.35 NxT (H: 1675mm)
	16046	1	Set of 4 E-adapters for Ø50mm pick-up

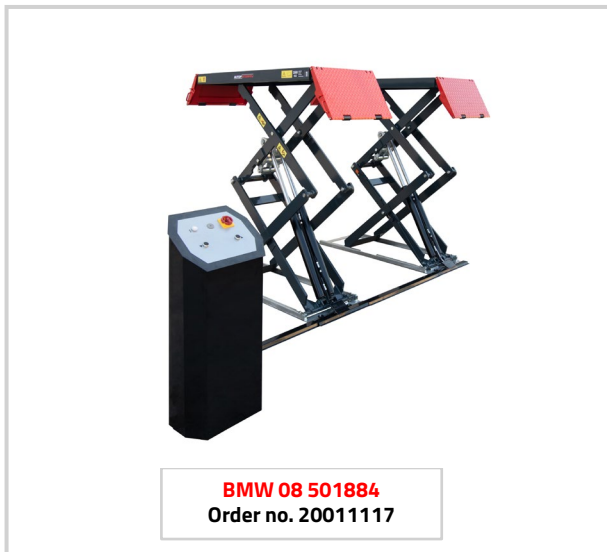
The 2-post lifts of the Maestro 2.xx series impress with their premium construction. They come with **extremely stable and welded columns**. Smooth running behaviour is ensured by the **roller-bearing carriage**. The **cold-rolled spindle** guarantees a **particularly long service life**. The columns are asymmetrically positioned, i.e. vehicles can be positioned far to the rear, which ensures an **optimal door opening angle**. Of course, the Maestro 2.35 NxT also has a door stop protection to prevent damage during entry and exit. The **swivel arms are extremely flat** and thus ensure a **low minimum height**. The **internal arm locking system** with strong 360° interlocking protects against moisture and dirt.

Standard color:
Arms: RAL 3020
Posts: RAL 7016

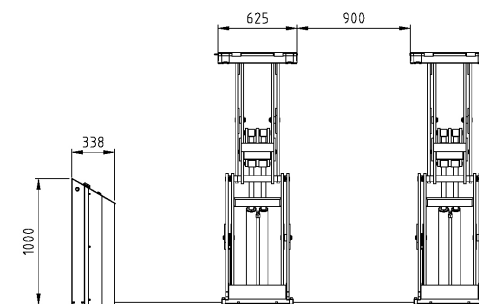
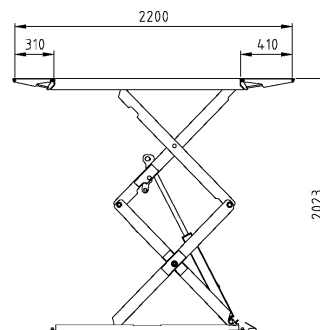
Options:
Available with different portal heights, alternatively inground kit
LED lighting set
Energy set with compressed air and socket-outlet
Set of expansion bolts
Extra control unit for second column
Large program of extra pads, depending on type of vehicle

Versions:
Available for different voltages
F = flex pad





Order no.	Item no.	#	Part of the approval according to order no. 20011117:
20011117	002546	1	MagiX 35 DS II long (platform length incl. drive on ramps = 2200mm)



The double scissor lift MagiX 35 DS II convinces with **an optimal lifting range** from small passenger cars to VW T6 short wheelbase / BMW 7 series long and SUVs. Thanks to **the low overall height of only ≤100 mm**, even driving over with flat vehicles is no problem. We achieve full lifting capacity from a low lifting height. The MagiX 35 DS II comes with a **comfortable working height of over 2 metres**, which is important for ergonomics at the workplace. The MagiX 35 DS II does not have a predefined drive-on direction, i.e. it can be driven on from both sides and the positioning of the control column can be flexible. It also **does not require compressed air or a safety ratchet**. The MagiX 35 DS II scores with lubrication-free teflon sliding bearings in all joints and a **stable scissor construction** that ensures high lateral stability. The **synchronisation** is monitored **electronically**.

Standard colour:

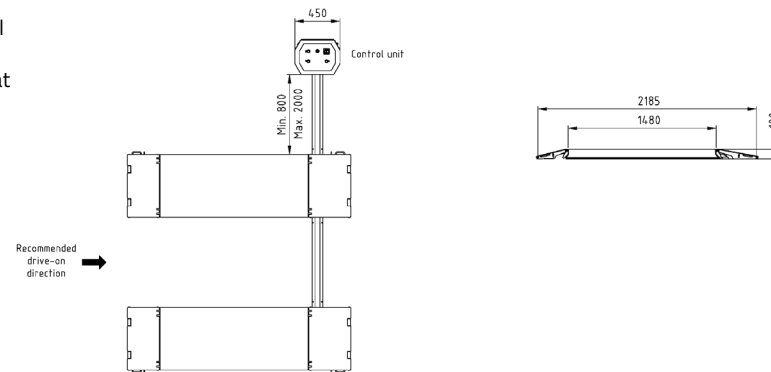
Platform & scissor: RAL 7016
Ramps: RAL 3020

Versions:

G = galvanized platforms

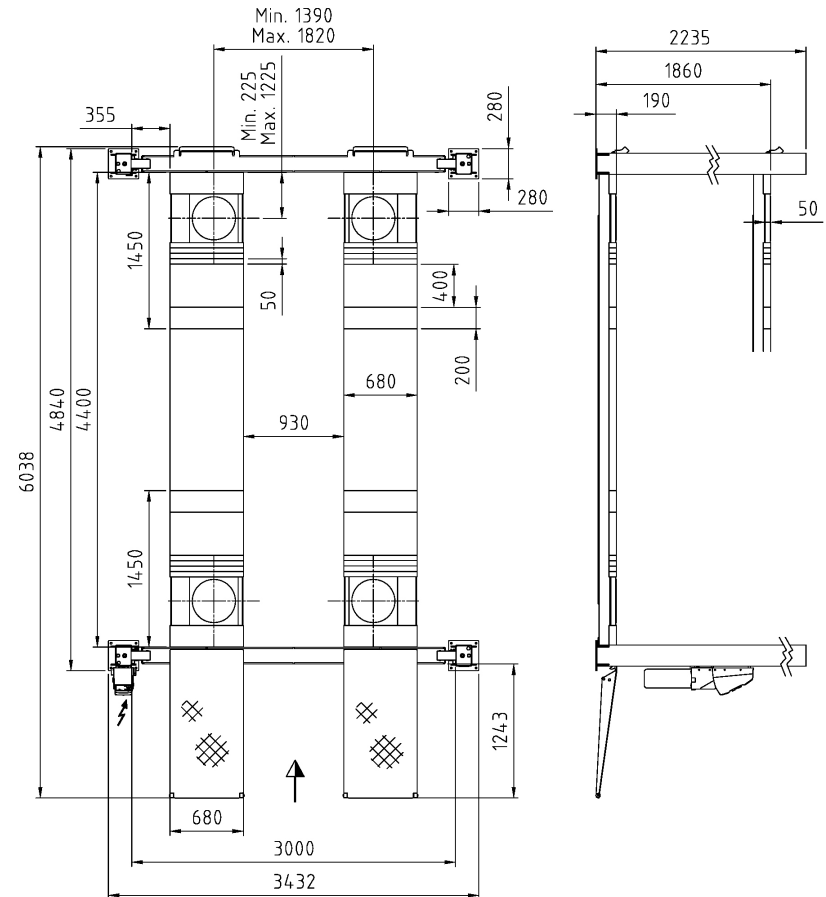
Options:

- Set of expansion bolts
- LED-lighting set for surface-mounted installation
- Installation frame galvanized, for recessed installation
- Rubber blocks in different heights
- Hose extensions incl. covers
- Additional long drive-over ramps for lowered cars
- On-floor or recessed installation with the same lift





Order no.	Item no.	#	Part of the approval according to order no. 20011106:
20011106	931838	1	Major 4030-44 WL DLX, 400/3/50 - powder coated - RAL 9010/7016
	755714	1	Filling pieces for front recess instead of turn tables (1 set = 2 pieces)
	755069	1	Set of 16 expansion anchor bolts - HSL - 3 M 10/40 (L=130)
	756579	1	Set of 2 drive-on ramps for Major 4030-44 WL, 1200mm
	756580	1	Set of 2 end stops for Major 4030-44 WL DLX & 5529-55 WL - powder coated



The 4-post wheel alignment lift Major 4030-44 WL DLX impresses with **optimum driveability**, from small cars to smaller commercial vehicles. This lift automatically settles in a finely adjusted catch bar that ensures **optimal track position for successful wheel alignment**. With a platform length of 4400 mm and a load capacity of 4.0 tonnes, it is the ideal wheel alignment solution for cars in surface-mounted areas. It can be installed both on-floor and recessed. To meet the needs of as **many track widths as possible**, a platform can be moved transversely to the driving direction. This is how we ensure that even the narrowest vehicles can be lifted. In addition, the lift impresses with a **convenient effective height of 2.0 m**, thus fully meeting current workplace ergonomics requirements.

Standardlackierung:

Platforms & posts: RAL 7016

Ramps: RAL 3020

Options:

LED-lighting set

Extra control unit

Set of two cover plates for recesses

Access to the lifting points of modern vehicles is becoming increasingly challenging, especially for electric vehicles.

With our **e-car adapters**, we offer a **simple and safe solution** that can often **also be used for your existing AUTOPSTENHOJ lifts**.

The **slim and low design** ensures accessibility to the lifting points and to the battery. With our e-adapters, nothing stands in the way of changing the battery.

The **ground clearance remains as low as usual** despite the e-adapter.

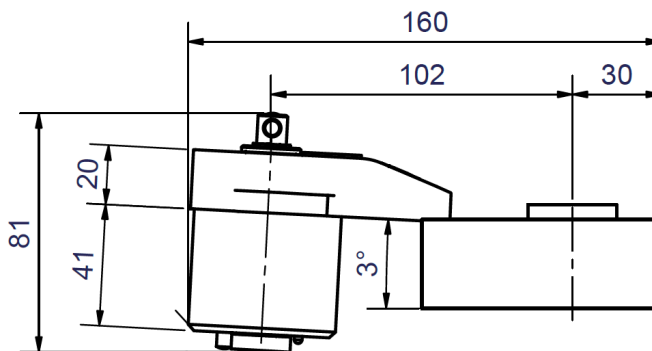
Simple and uncomplicated changeover to other adapters is done in a few simple steps.

The e-adapters come with a **strong 1,000 kg load capacity per adapter**.



BMW 08 502679
Order no. 20011120

Order no.	Item no.	#	Part of the approval according to order no. 20011120:
20011120	16046	1	Set of 4 E-adapters for Ø50mm pick-up

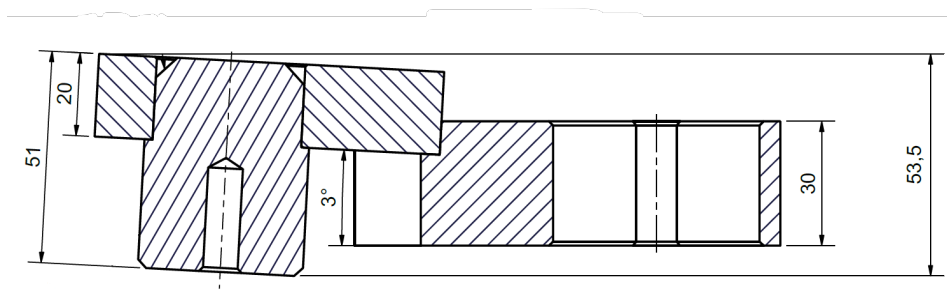


Standard colour:
RAL3020



BMW 08 502678
Bestell-Nr. 20011121

Order no.	Item no.	#	Part of the approval according to order no. 20011121:
20011121	16047	1	Set of 4 E-adapters for Ø40mm pick-up



Standard colour:
RAL3020



BMW 08 502680
Order no. 20011119

Order no.	Item no.	#	Part of the approval according to order no. 20011119:
20011119	14142	1	Power module NxT without bracket for SPS-lift control unit

Our power modules for **direct power supply at the workstation** ensure optimal freedom for working in your workshop.

It is **completely pre-wired** ready for connection, meaning you can get started straight away! The head piece and bracket have a double air connection and, of course, the power module is fitted with a protective bracket.

The power module is suspended from an **air cylinder** supplied, which is **height-adjustable by 600 mm**. You can lower the power module to working height and use it comfortably with a simple hand movement. The power module remains at working height without you having to hold it, i.e. **you have both hands free**. After use, you can quickly and easily raise the power module again and it is back above your working area.

Standard:

- Safety components incl. Fi circuit breaker, fuse protection under transparent operating cover
- Variant with maximum connections, not suitable for mounting an AUTOPSTENHOJ inground lift control unit
- Complies with the DIN EN 61439 switchgear standard
- IP44 splash-proof
- Housing RAL 9002 | Bracket RAL 7016
- Pneumatic stroke: 600 mm
- 3 x 230 V
- 1 x 230 V | 1 x 400V/3ph/16A
- LAN connection

