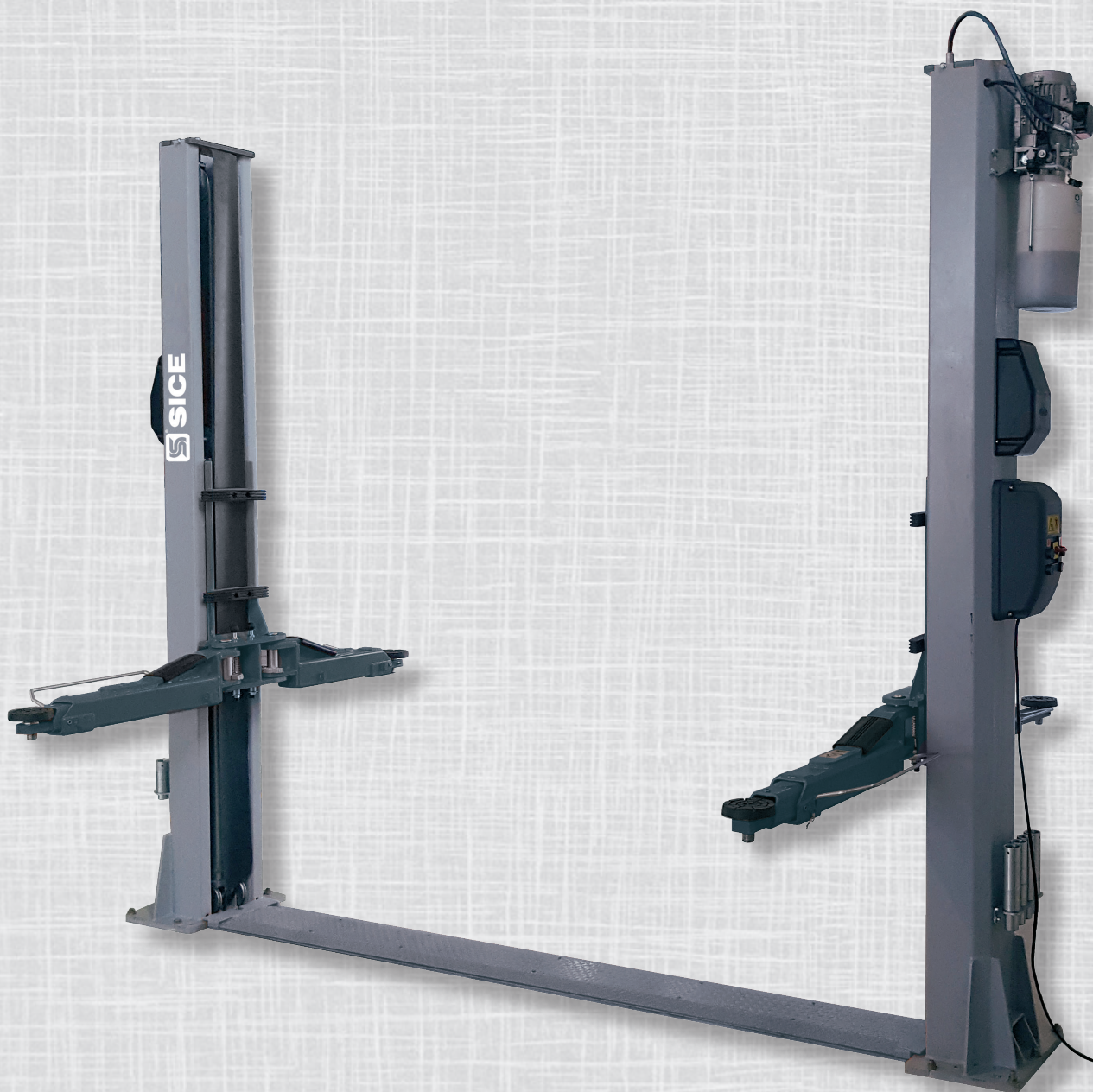


**PDCH 45C B**  
**PDCH 35C B**



4500



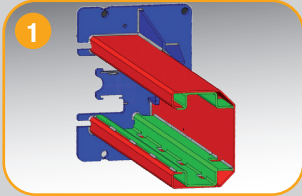
3500



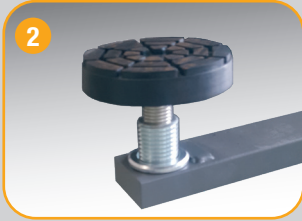
**C-LINE**

**Lifting equipment**

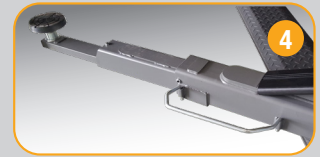
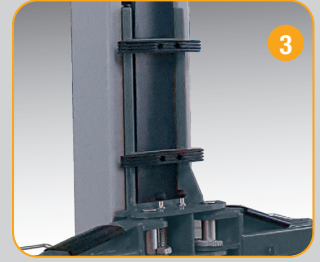
**EN** → Electro-hydraulic two post lifts with base connection for low ceiling height



Electro-hydraulic two post lifts with base connection for low ceiling height.  
**Realignment of the two carriages** using metal cables that guarantee **excellent synchronisation**.  
 Three-stages asymmetrical lifting arms.



- 1 **Internally reinforced column structure** for little bending and internal cable guiding.
- 2 **Double threaded lifting pad** to ensure excellent vertical adjustment (95-180 mm).
- 3 Rubber door protections. **Toothed sector arm** rotation stop system
- 4 **Four three-section asymmetrical arms**. Last section of arms very thin (30mm), for easy access to flat vehicles.

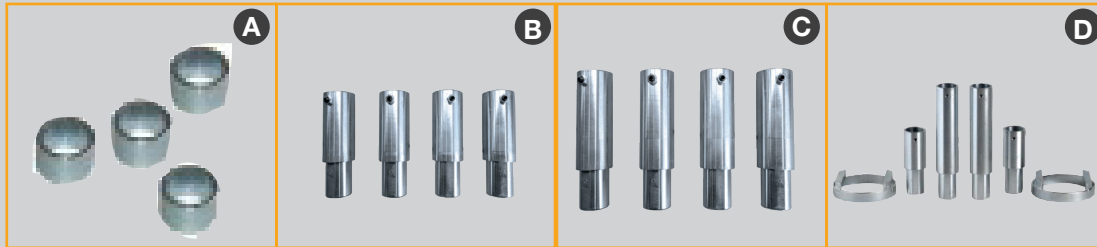


### EN → Supplied accessories

All models complete with:

- ✓ Mechanical carriage support device on each column ensures optimum working safety.
- ✓ Two set of extension pads.

### EN → Optional accessories

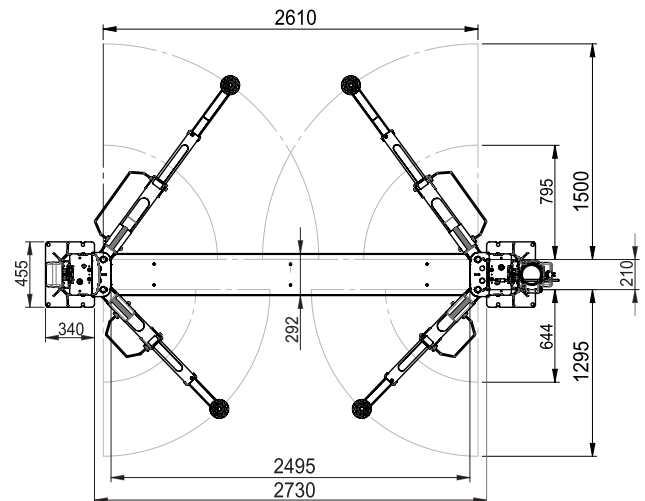
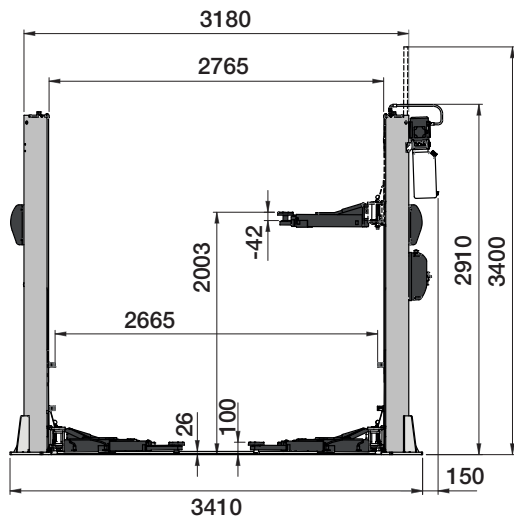


### EN → Technical Data

Model	PDCH 45C B	PDCH 35C B
Lift capacity	4500 kg	3500 kg
Lifting time	40 s	
Three phase motor	400/230V - 3kW - 3Ph - 50/60Hz	
Single phase motor	230V - 3kW - 1Ph - 50/60Hz	
Max. lifting height	2003 mm	
Lift minimum height	100 mm	

- A 8-43300021** Set of 4 extension for pads, H=35 mm
- B 8-43300014** Set of 4 extension for pads, H=80 mm
- C 8-43300015** Set of 4 extension for pads, H=140 mm
- D 8-43300016** Set of 4 adapters for Mercedes Sprinter

### EN → Overall Dimensions



The manufacturer reserves the right to modify the features of its products at any time.

Cod. DPSC000473A - 01/2023